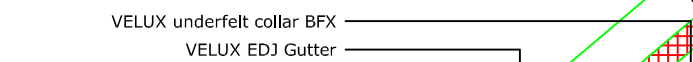
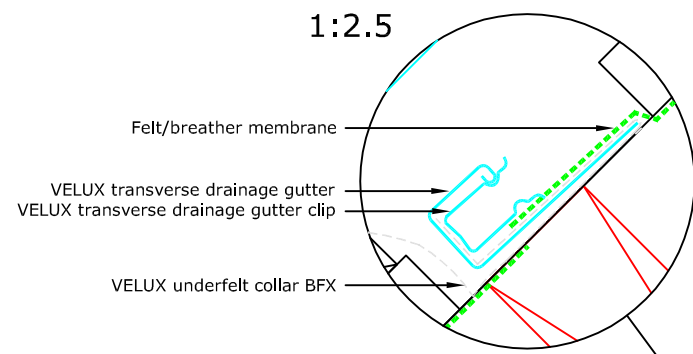
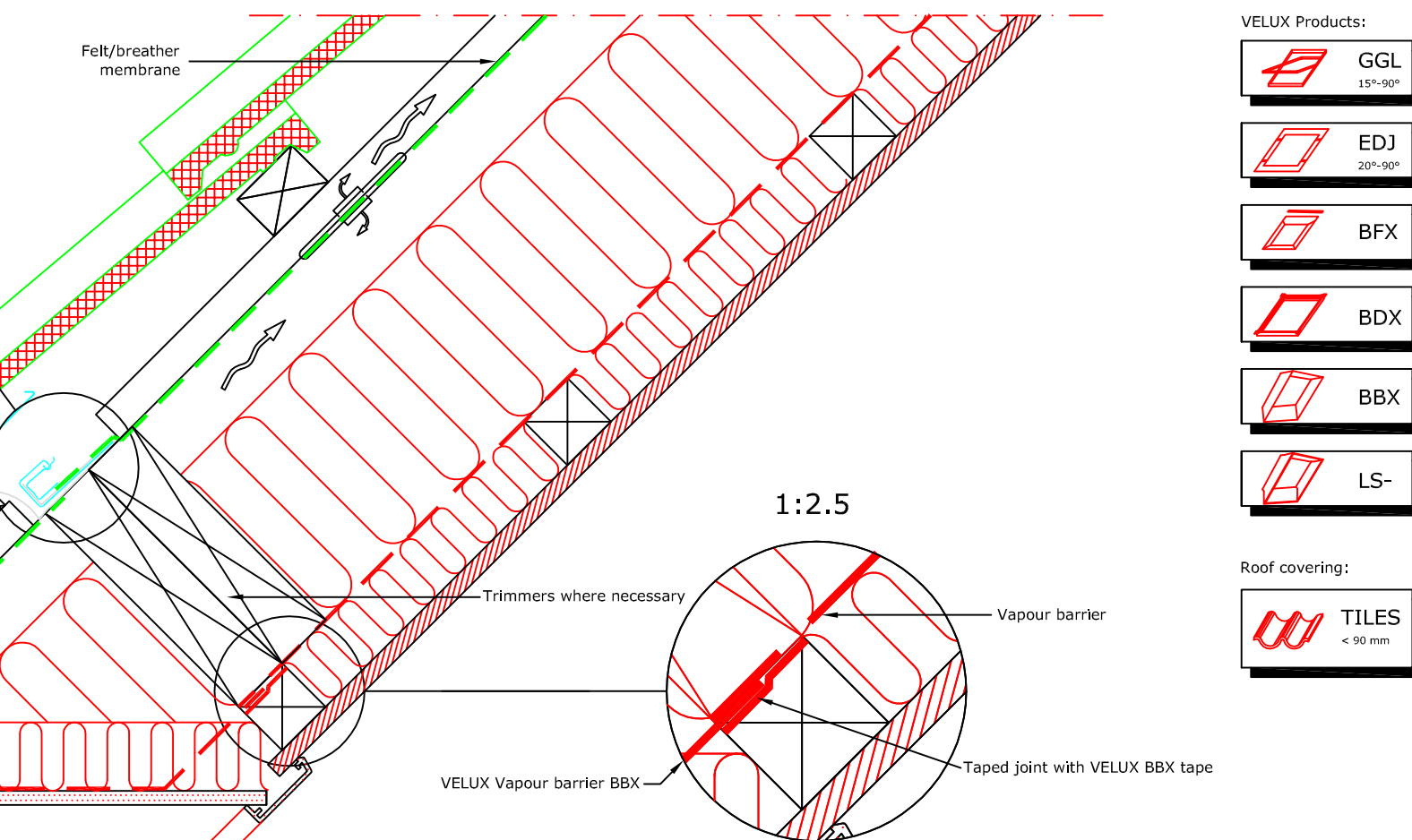
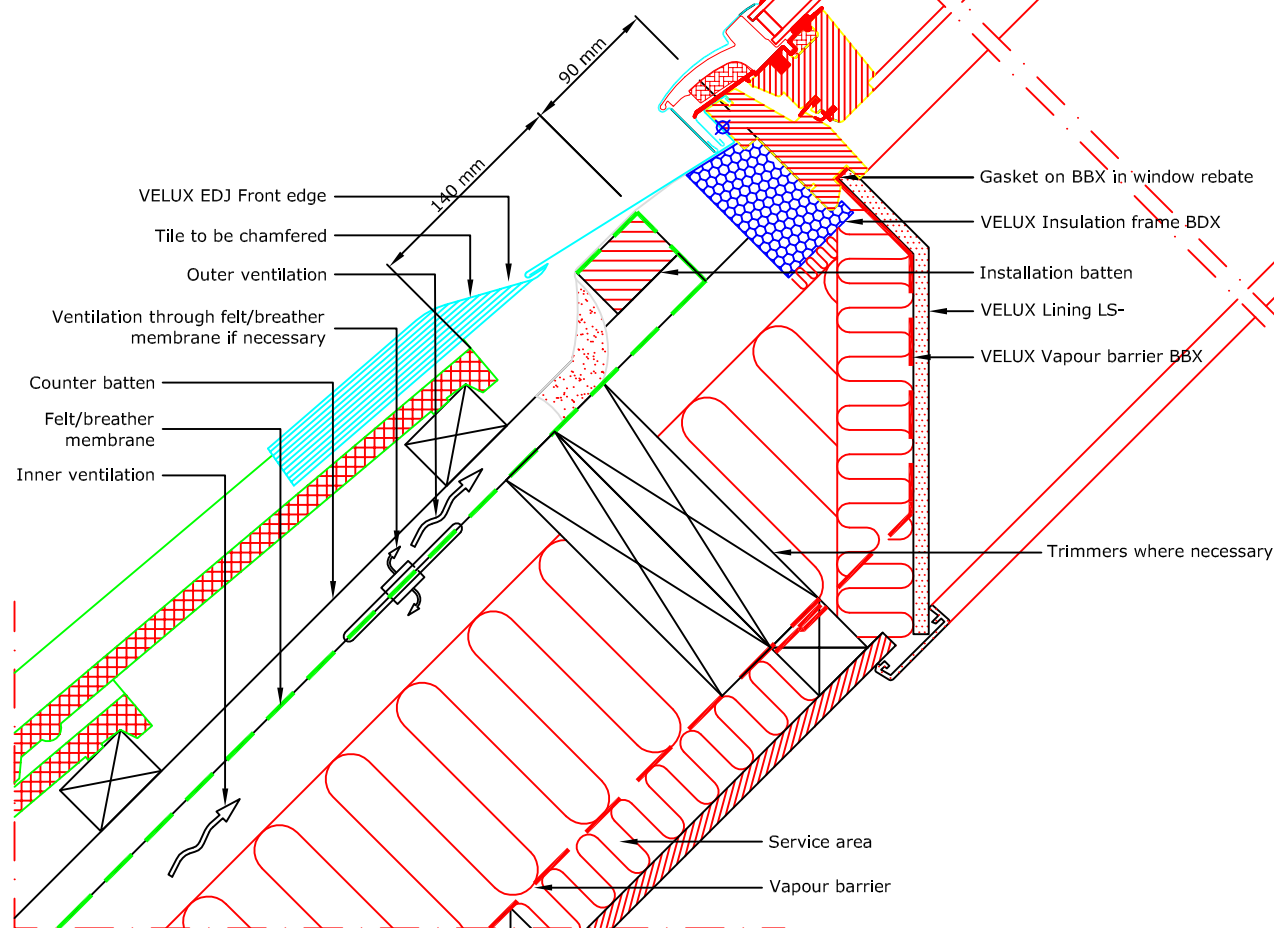


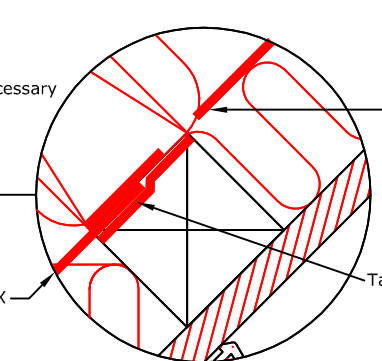
TYPICAL ELEVATION



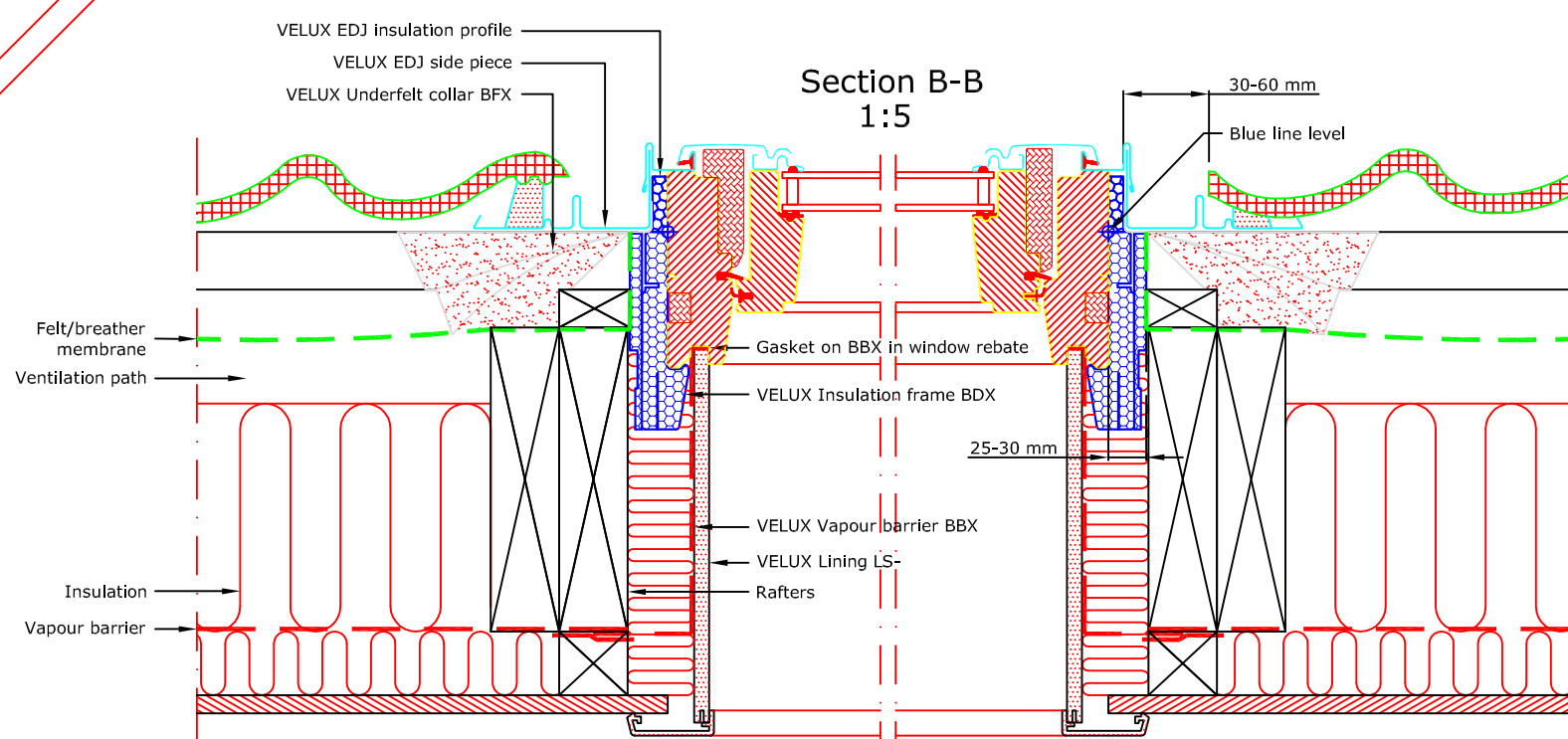
Section A-A  
1:5



1:2.5



Section B-B  
1:5



VELUX Products:

- GGL 15°-90°
- EDJ 20°-90°
- BFX
- BDX
- BBX
- LS-

Roof covering:

- TILES < 90 mm



VELUX Company Ltd  
Woodside Way  
Glenrothes, Fife KY7 4ND  
tel: +44 (0) 1592 778 225

VELUX centre-pivot roof window  
**GGL single installation into profiled tile**  
EDJ flashing kit - recessed install for tiles up to 90mm thick  
*All dimensions are in millimetres where shown*

NOTE! When installing VELUX roof windows, flashings and accessories, please ensure compliance with building regulations and British/European standards where necessary. This detail represents the principles of a typical installation only and the design and specification of the final detail is the responsibility of others.

Latest revision:

Date: **January 2014**

File name:

Rev no:

**GGL-EDJ-0114-1101**

Rev date:

Drawn: **PJH**

Scale: **1:5 approx. @ A3**